

FOR LEASE

PROFESSIONAL OFFICE SPACE

Bayside Concourse

15500 Lightwave Drive | Clearwater, FL 33760

Class A Office Building

3,291 - 24,939 SF Available

4.55/1,000 SF Parking

"Full Service" Lease - Includes Electric, Water, and Janitorial

Asking Rate - \$24.00 - \$26.00 PSF



WHY CHOOSE BAYSIDE CONCOURSE FOR YOUR NEW OFFICE

- Centrally located with direct access to the Gateway Expressway and I-275
- High quality workforce of over 412,000 employees within 20 minute drive
- 5 minutes from numerous restaurants, fast food, banks, hotels, and retail
- Building and pylon signage available
- Flexible floor plans with turnkey buildouts available
- On-site management
- Secure 24/7 access



SANDY HALL
M: 813-230-1400
T: 727-238-3876
sandy@holdthysen.com

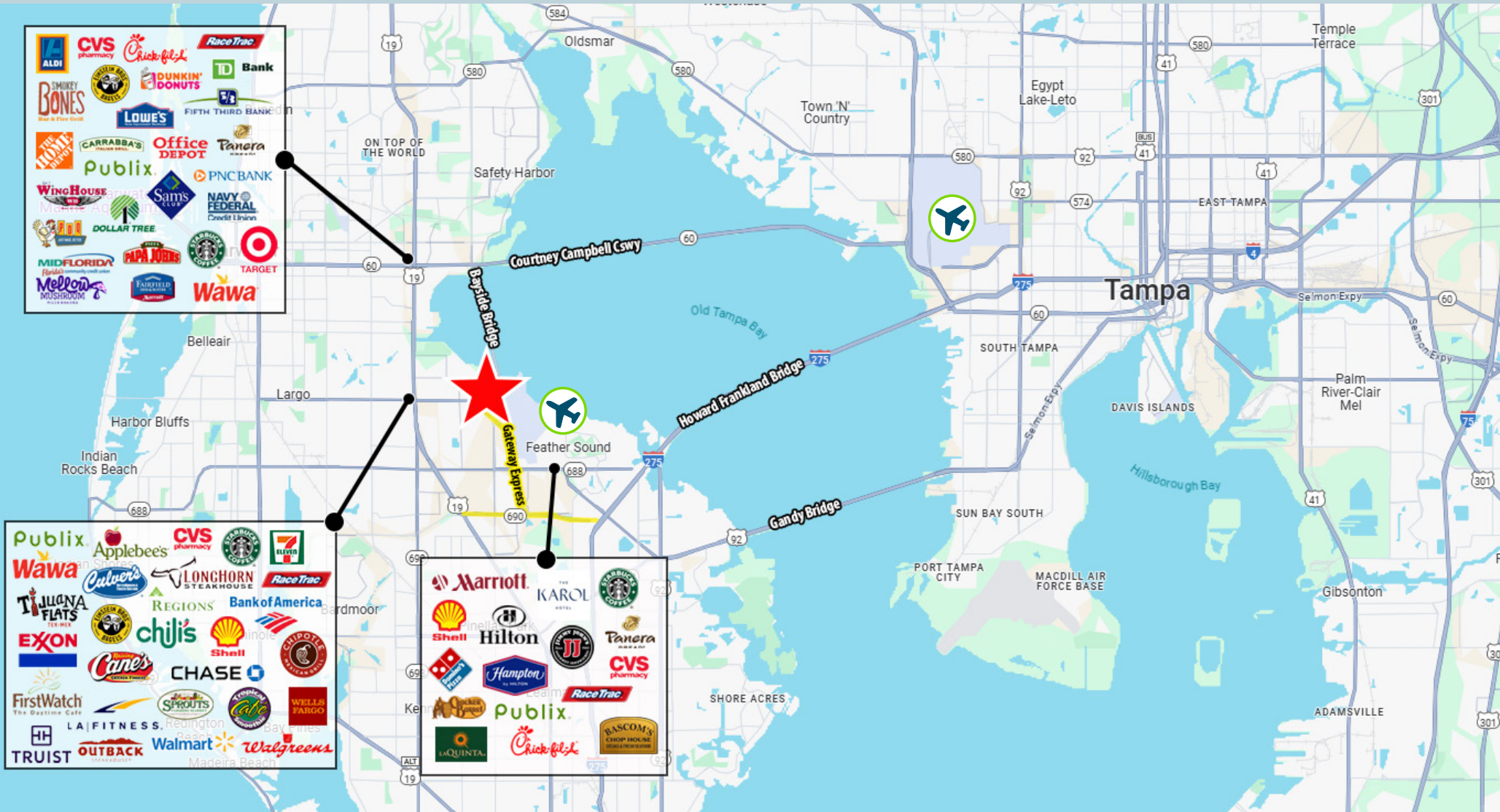
15500 Lightwave Drive
Suite 201
Clearwater, FL 33760
www.holdthysen.com

The information above has been obtained from sources believed reliable. While we do not doubt its accuracy we make no guarantee, warranty or representation about it. It is your responsibility to independently confirm its accuracy and completeness. Any projections, opinions, assumptions, or estimates used are for example only and do not represent the current or future performance of the property. Hold Thyssen, Inc. is a licensed real estate broker.





Amenities: 5-10 Minute Drive



HOTELS
10+



FAST FOOD
35+



RESTAURANTS
55+



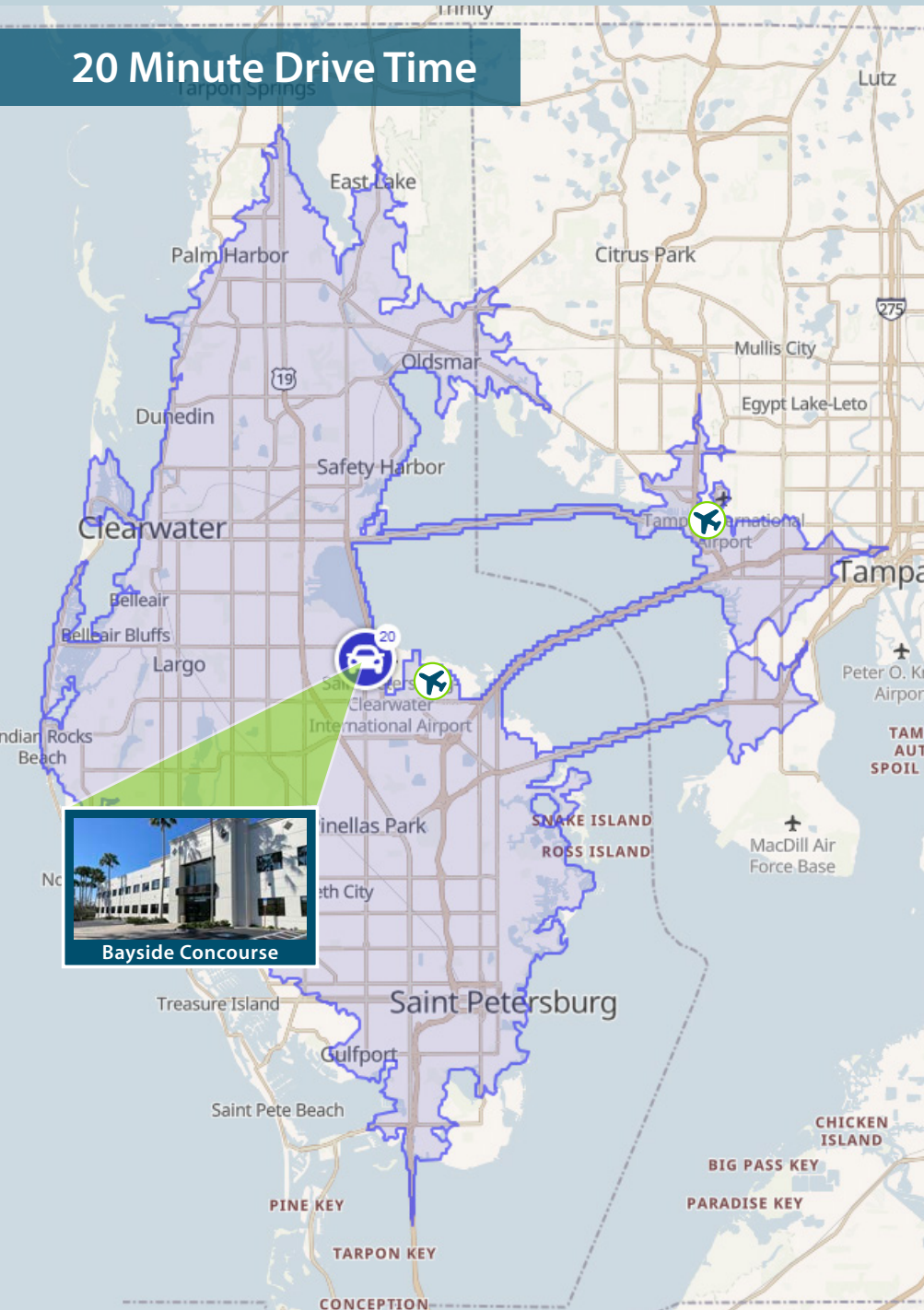
BANK BRANCHES
18+



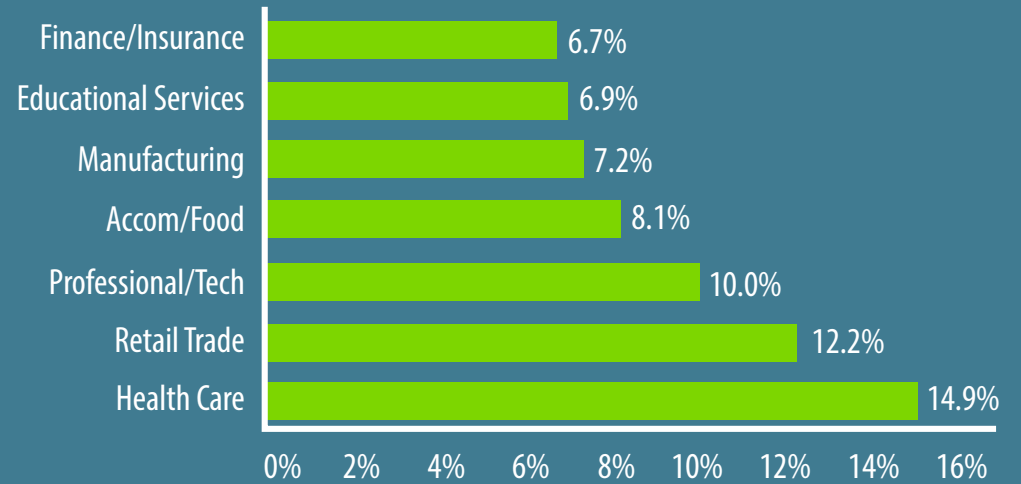
DRIVE TIMES/WORKFORCE



20 Minute Drive Time



Labor Force by Industry



Workforce Overview



40,598
Businesses



412,303
Employees



17.4%
Services



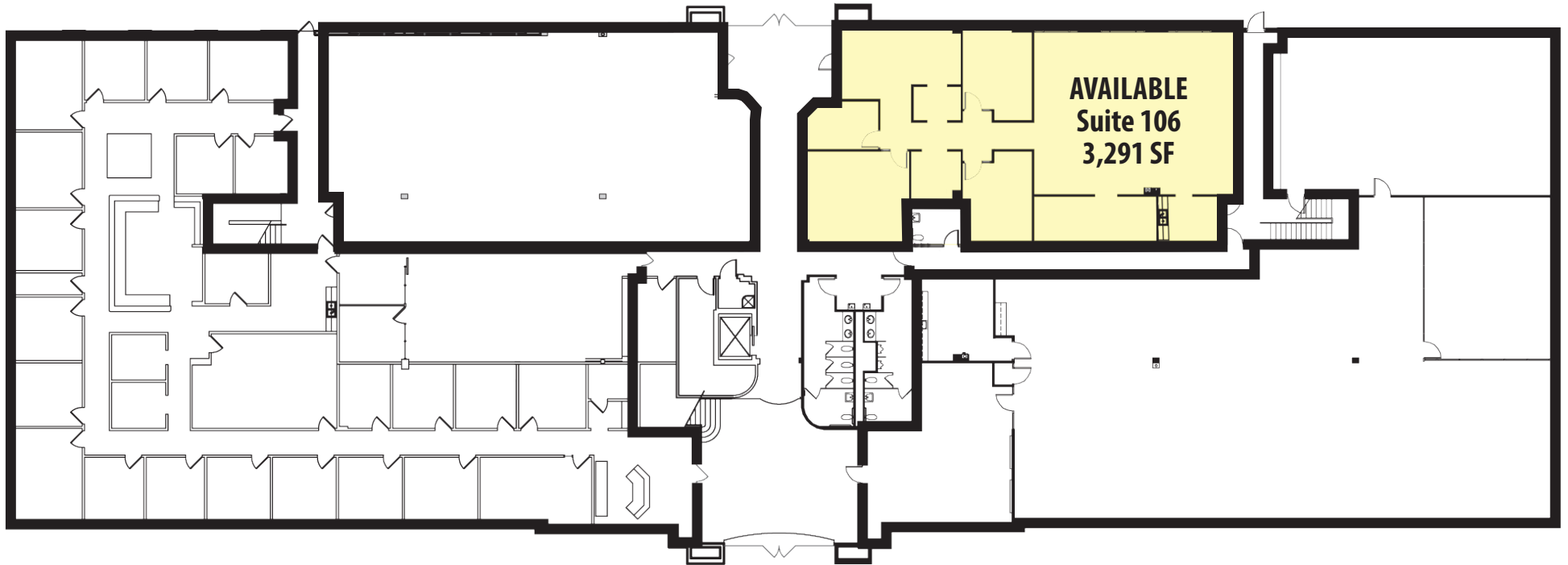
16.8%
Blue Collar



65.8%
White Collar

1ST FLOOR AVAILABILITY

Suite 106 - 3,291 SF



Suite 106 Entrance



Suite 106 Open Office Space

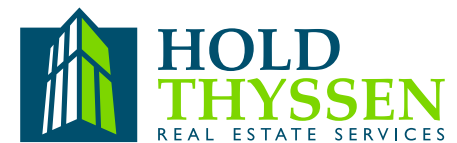


Suite 106 Office



SANDY HALL
M: 813-230-1400
T: 727-238-3876
sandy@holdthysen.com

15500 Lightwave Drive
Suite 201
Clearwater, FL 33760
www.holdthysen.com



The information above has been obtained from sources believed reliable. While we do not doubt its accuracy we make no guarantee, warranty or representation about it. It is your responsibility to independently confirm its accuracy and completeness. Any projections, opinions, assumptions, or estimates used are for example only and do not represent the current or future performance of the property. Hold Thysen, Inc. is a licensed real estate broker.